

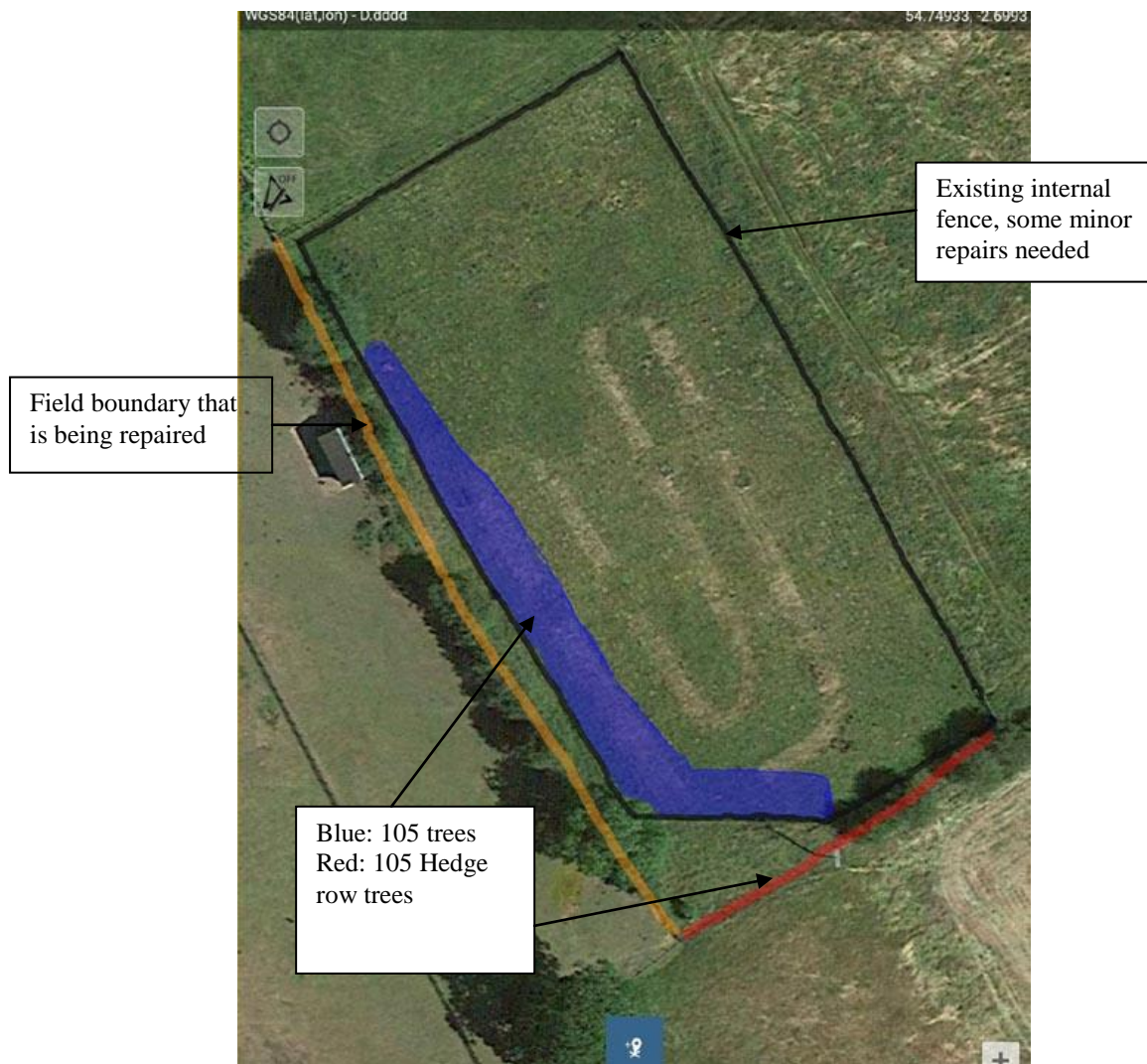
LAZONBY PLAYING/SPORTS FIELD PLANTING SCHEME

Work Area and Access



The map is to show the access to the School Field (yellow) where the donated trees are to be planted. The access is through the tops of the fields (blue), which is accessed through a gate that is along the school lane.

Planting Plan



The current western field boundary is due to be repaired by an external contractor selected by Lazonby Parish Council. The internal boundary that was installed for a separate project is to be retained to protect the new trees. There are some minor repairs that are required to this but the can be done by myself and volunteers. There is a power line that crosses the southern end of the site but this is being given a 5m buffer as to current UK planting specifications.

The blue area is to be planted with 105 native species of trees. The majority of this is to be done with the students from the Village school and members of Lazonby Parish Council. The exact plan will be defined by the Corona Virus Restrictions in place at the proposed planting date (TBC).

The red area shows where 105 shrub species are to be planted to repair/replace the original hedgerow. This will be completed by myself and one or two other volunteers, this will have to be done to specific specifications as its hedgerow restoration. This will most likely be done ahead of the central planting as it can be done inside the COVID Restrictions.

Trees and Planting

The Woodland Trust has provided a planting guide, which I will use to help demonstrate the correct planting techniques to the School and the volunteers. As well as the trees they have also sent canes and spiral guards as tree protection.

The trees packs we have been sent include the following species;

Rowan
Silver Birch
Wild Cherry
Common Oak
Field Maple
Grey willow
Hawthorn
Blackthorn
Hazel.

There will be some post-planting maintenance, this will be minimal so I will do the work as and when it is required.

Councillor Phillip Whitehead.