

An aerial photograph of a river flowing through a lush green landscape. A stone bridge with three arches spans the river. The surrounding area is filled with trees and rolling green hills. The text is overlaid on the image in white, bold, sans-serif font.

LAZONBY NEIGHBOURHOOD PLAN 2014 – 2032

The Referendum is coming!

**The Plan was approved for Referendum
by Eden District Council on 2nd July 2019
following Statutory Independent Examination.**

**Copies of the Plan and
other documents may be viewed at
[www.lazonbyparishcouncil.org-
NeighbourhoodPlan-submissiondocuments](http://www.lazonbyparishcouncil.org-NeighbourhoodPlan-submissiondocuments)**

1. Introduction

Lazonby Neighbourhood Plan provides residents with a unique opportunity to determine the future planning policies for the Parish. The referendum is being held on Thursday 17th October 2019. Your support is critical. The referendum will not happen again.

This booklet summarises the content of the Plan. There have been some changes to the content of the Plan following formal consultation with statutory authorities and local residents.

Voting 'yes' in the forthcoming referendum will make the hard work of the last four years a reality. A majority 'yes' vote is essential if the Plan is to be adopted and become the official planning rules for Lazonby Parish. Failure to secure a 'yes' vote means that the provisions of the National Planning Policy Framework and the Eden Local Plan will apply and as a popular place to live with a good range of services, there may be unrestricted development in the Parish.

Dedication and Acknowledgement

This Plan is dedicated to the memory of wElizabeth Howe and Chris Hill who made outstanding contributions to its production.

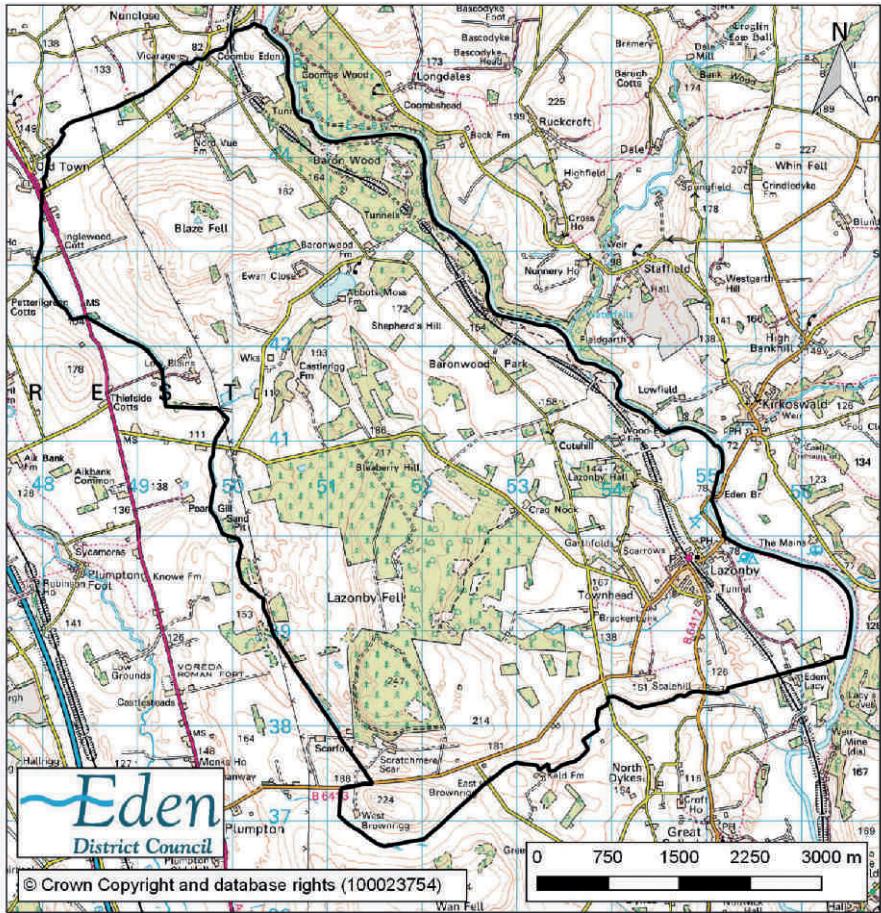
Lazonby Parish Council and Lazonby Neighbourhood Plan Steering Group acknowledge the help, advice, support and contributions by many people and organisations in the preparation of the Plan.

More information

For more information and to have your questions answered please attend the drop-in at Lazonby Village Hall on Wednesday 9th or Tuesday 15th October from 7.00pm – 9.00pm. Refreshments available.

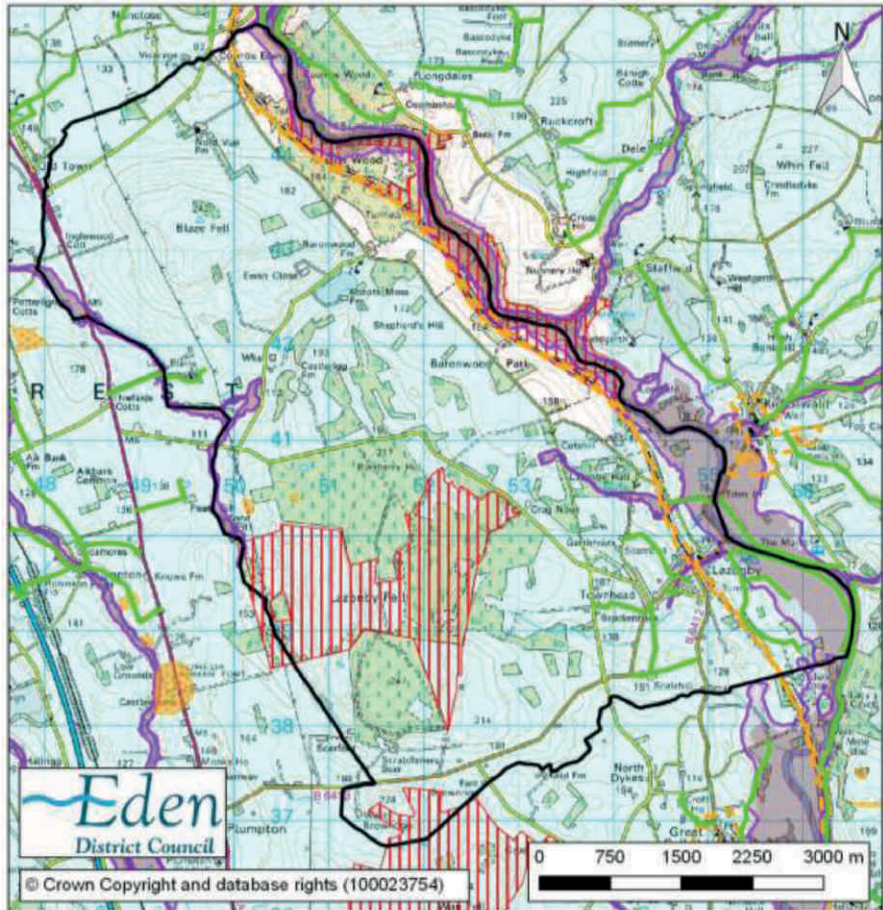


Figure 1 – The Parish of Lazonby.



Scale: 1:48,000@A4 GM/AD/23.11.16

Figure 2 – The Parish of Lazonby – existing designations.



Scale: 1:48,000@A4 GM/AD/23.11.16

Key

- Parish boundary
- Conservation Areas
- Flood Risk Zone 2
- Flood Risk Zone 3
- Listed Buildings
- Public Rights of Way
- Scheduled Ancient Monument
- Sites of Special Scientific Interest
- Special Areas of Conservation
- Wind Energy Suitable Area

What the Plan is about

Management of Development in Lazonby

Sites for housing and businesses, priority for brown field sites.

Design and Conservation

Good design that blends with surroundings, protection for valued amenities.

Leisure and Recreation

Green open spaces, footpaths and cycle ways, children's play areas and public rights of way identified and protected.

Housing Development

New houses in suitable places, numbers managed, amenities including car parking arrangements specified.

Rural Business Development

New businesses encouraged but amenity of residents protected, farm diversification encouraged, tourism and leisure promoted.

Renewable Energy

Domestic and business related micro energy schemes encouraged to meet local needs and reduce energy costs.

Infrastructure Capacity

Planning applications should demonstrate that adequate capacity exists for sewage and surface water disposal. No development on main routes through village unless on site car parking is provided.

**It's your Plan – there will not be another chance.
Please support it or it will not happen!**

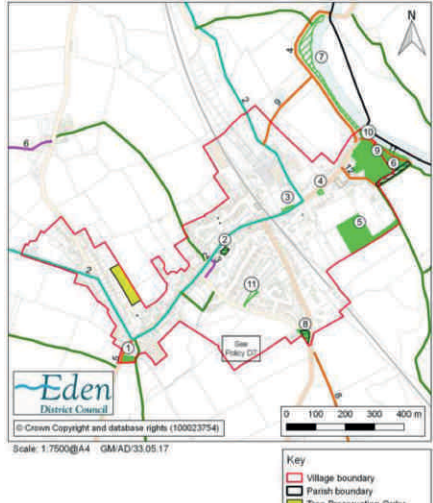
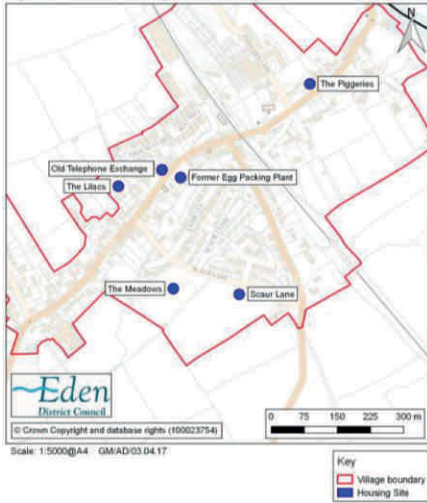
Six good reasons why you should vote “yes”

- 1. The people who live in Lazonby will have the final say on planning policies for the Parish.**
- 2. The Plan sets a village boundary for Lazonby and identifies building sites within the boundary.**
- 3. The Design Guide will help to ensure that new buildings will match their surroundings.**
- 4. Existing green spaces, existing footpaths and significant trees will be protected.**
- 5. New businesses within the Parish will be encouraged.**
- 6. Traffic problems in the village will be addressed.**



Proposed housing sites

Footpaths and open spaces



It can't happen if you don't vote

Referendum Details

“When and where?”

On Thursday 17th October 2019
7.00am to 10.00pm at Lazonby Village Hall.

“Can I vote?”

You can vote if you are on the
Electoral Register for the Parish of Lazonby.
You may also use your postal vote.
To check this or get a postal vote
go to www.eden.gov.uk or call
Eden Electoral Services on **01768 817817**.

Lazonby Neighbourhood Plan – Yes

